

Lighting Parameter Analysis Report



Product information and test conditions

| | | | | | |
|-----------------|---------------------|-------------|----|-------------|---|
| Name | B1008-D-BN | | | | |
| Time | 2018-04-26 17:14:11 | | | | |
| Manufacturer | Barcelonaled S.L. | | | | |
| User | BLED | | | | |
| Temperature(°C) | 25 | Humidity(%) | 49 | Distance(m) | 1 |

Parameters

CIE_X 0.3841

CIE_Y 0.3896

CIE_u' 0.2224

CIE_v' 0.5077

CCT 3997 K

CRI (Ra)(R1~R8) 82

CQS 83

TLCI(Qa) 68

GAI 68

TM-30-15 Rf 83

TM-30-15 Rg 96

SDCM 2.6

Color Ratio R 19.39% G 77.62% B 2.99%

λ_p 590 nm

Flicker Percentage 7 %

Flicker Index 0.02

Flicker Frequency 100 Hz

Luminous Flux 1671 Lm

Luminous Efficiency 112.1 Lm/W

Radiant Flux 5.08 W

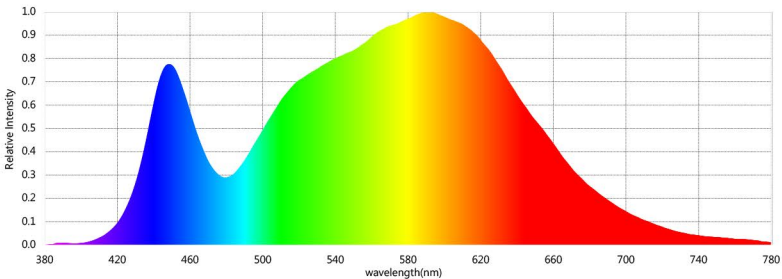
Voltage 220.8 V

Current 0.070 A

Watte 14.90 W

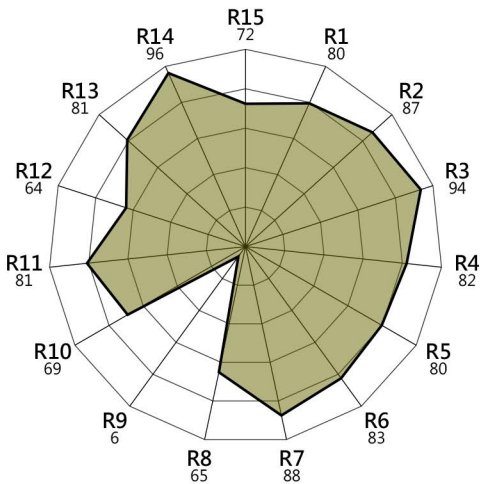
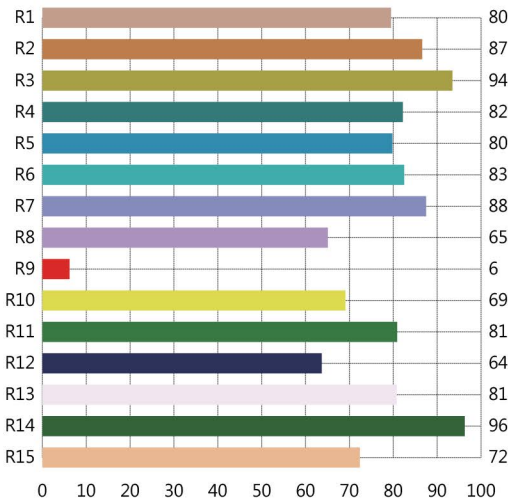
Power Factor 0.965

Spectrum



CRI (Re) (R1-R15)

Ra = 82 Re = 75

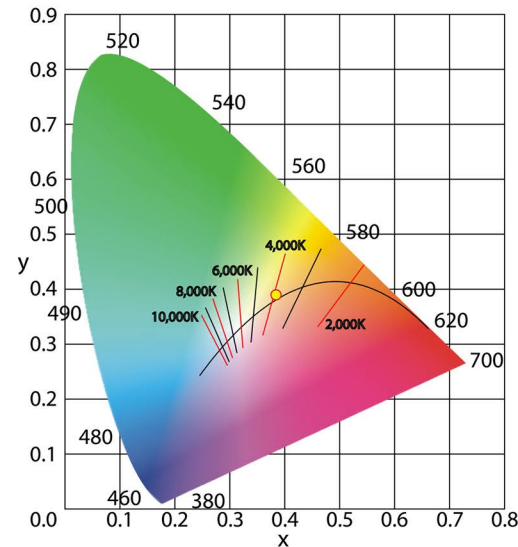


Lighting Parameter Analysis Report



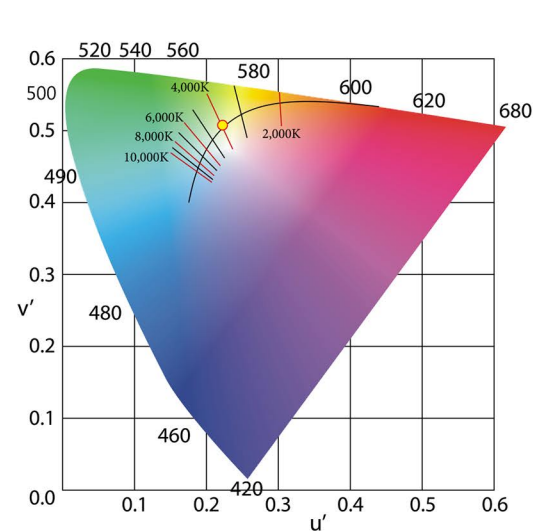
CEI 1931

$x = 0.3841, y = 0.3896$ CCT = 3997K

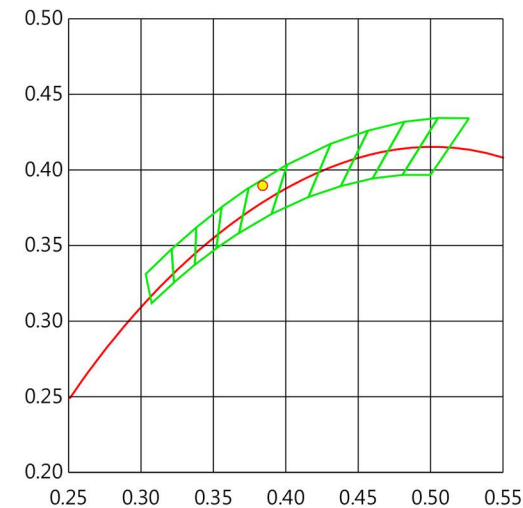


CEI 1976

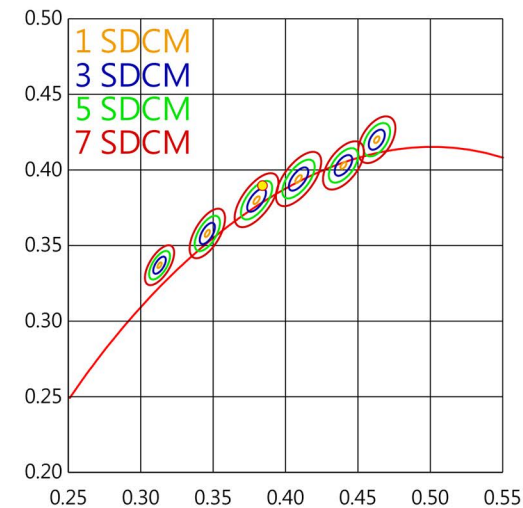
$x = 0.2224, y = 0.5077$ CCT = 3997K



C78.377 - 2017



IEC-SDCM



TM-30-15

Rf = 83 Rg = 96

